



PRESENTERS:

Tonia McDonald, Phil Brown & Dale Sims



AGENDA

- About Global Business Incubation
- GBI: Three Mission Areas
 - GBI-Emerald Veterans Project
 - GBI Manufacturing Consortium
 - ❖ Workforce Development and Training
 - GBI Technical Institutes
- Plan of Action

ABOUT GBI





GLOBAL BUSINESS INCUBATION (GBI)

- A 501(c)(3) nonprofit corporation established in 1991 at Loyola Marymount University (LMU) College of Business Administration (CoBA) by a veteran lead team
- Founders:
 - ▣ **Paul McDonald** (Veteran, Futurist Researcher),
 - ▣ **Tonia McDonald** (IC² Global Research Fellow-University of Texas at Austin),
 - ▣ **Dr. George Hess** (Veteran, Former Assoc. Dean/Professor at LMU CoBA)
 - ▣ **Phil Brown** (Real Estate Development and Planning)
- GBI's innovative business incubator model received the Official White House Millennium Council Award: Honor the Past, Imagine the Future for Modeling hope, imagination and courage in incubating businesses that created hundreds of new jobs in downtown Los Angeles

GBI: THREE MISSION AREAS





GBI: THREE MISSION AREAS

GBI Emerald Veterans Project





GBI-EMERALD VETERAN PROJECT



- The American Dream is in jeopardy of being unachievable for our returning military veterans and our urban underserved communities (where many of our veterans reside).
- Our military men and women returning home have been trained at the highest levels with honor, commitment, dedication and leadership from their respective branch of Service.
- The GBI-Emerald Veterans Entrepreneurial Incubation Model, featuring 10 Cluster Smart Teams, is being established as a corporate business Incubator for Cyberspace and ‘Brick & Mortar’.
- Will provide our Veterans with a safe environment to grow and execute their talents, skills and leadership abilities.
- **Skills and integrity so needed in our Nation’s economy!**



GBI-EMERALD VETERAN PROJECT



10 Cluster Smart Teams Incubator

Advertising &
Public Relations Cluster

Management & Legal Cluster

Communications Cluster

Marketing & Research Cluster

Finance Cluster

Printing & Publishing Cluster

Image Development Cluster

Real Estate Cluster

Insurance & Leasing Cluster

Technology & Information
Systems Cluster



GBI: THREE MISSION AREAS

GBI Manufacturing Consortium



GBI MANUFACTURING CONSORTIUM

- Create and sustain a viable Science, Technology, Engineering and Mathematical (S.T.E.M.) industrial base within urban communities by combining Business Incubation for start-up and small businesses with Workforce Development & Training involving
 - ▣ Public and private academic alliances,
 - ▣ Companies within the Aerospace & Defense Industries,
 - ▣ Federal, State & Local Government
- Develop ‘teaching factory’ incubators to train and enable underrepresented groups to succeed in S.T.E.M. related industries,
- Provide affordable, shared facilities to startups and small manufacturing businesses



GBI MANUFACTURING CONSORTIUM

- In 2014, the Southern California area was designated as a "Manufacturing Community" Partner by the U.S. Department of Commerce, potential \$1.3B in Federal funding
- President Obama's Network for Manufacturing Innovation (NNMI) initiatives
 - ▣ A goal of 45 Institutes for Manufacturing Innovation across the Nation
 - ▣ Currently seven Institutes funded, two pending
- Department of Defense
 - ▣ FY16 Military Construction (MILCON) budget provides approximately \$7.7 billion for Civil Engineering projects



GBI MANUFACTURING CONSORTIUM

Creating & Sustaining Economic Engines

- Loyola Marymount University College of Business Administration (In Process)
 - South L.A. Economic Revitalization and Sustainability Plan

- CSULB College of Engineering & School of Construction Management (Preliminary Discussions)
 - Long Beach Economic Sustainability Plan

- Jackson State University (JSU) Office of Business Development (Preliminary Discussions)
 - JSU Economic Revitalization and Sustainability Plan



GBI MANUFACTURING CONSORTIUM

Industry Member

South Los Angeles Economic Revitalization & Sustainability Plan

Wheeler Construction Company Inc.

& Makes A Village



- ❑ Residential & Commercial
- ❑ Military Construction
- ❑ Veterans & Emergency Housing



Cold-Formed Steel Framing



WORKFORCE DEVELOPMENT & TRAINING

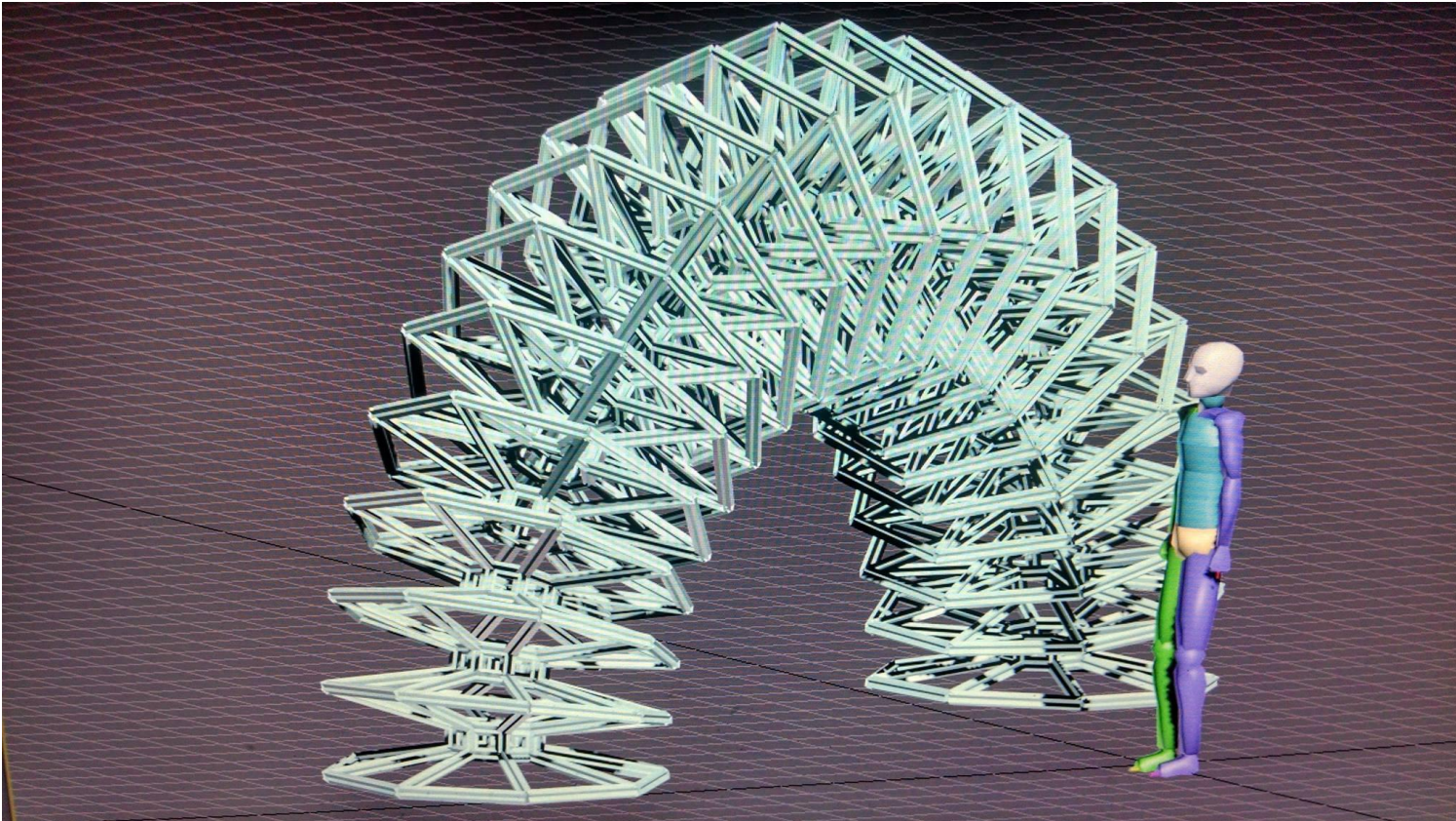
- Partnering with community colleges to prepare skilled S.T.E.M. technicians
- Los Angeles Trade Technical College (LATTC) Design & Architecture Department
 - Computer-aided Drafting and Design: Creating a dual path Workforce Development and Training Initiative
 - Product Design: Home Automation
 - Smart Building Designs: Net Zero Energy, LEED Platinum
 - Target Participants: young adults (ages 18-24) who possess a natural propensity of Visual Art and Mechanical Assembly



WORKFORCE DEVELOPMENT & TRAINING

LATTC: Product Design

PROPOSAL FOR URBAN GARDEN FLEXIBLE TRELLIS



Student Erick Altman

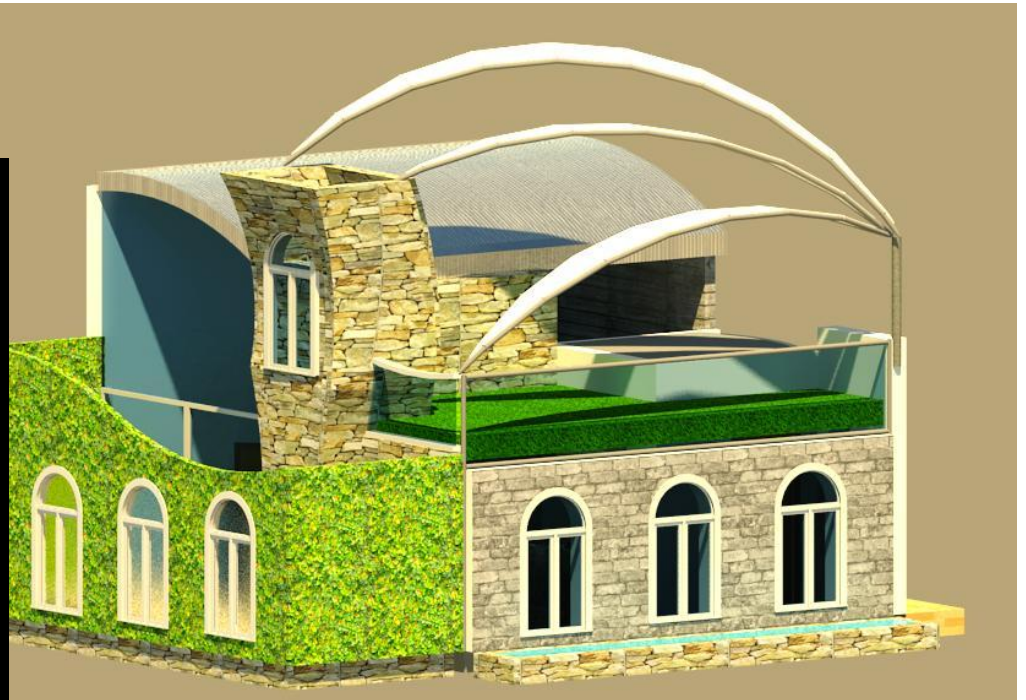
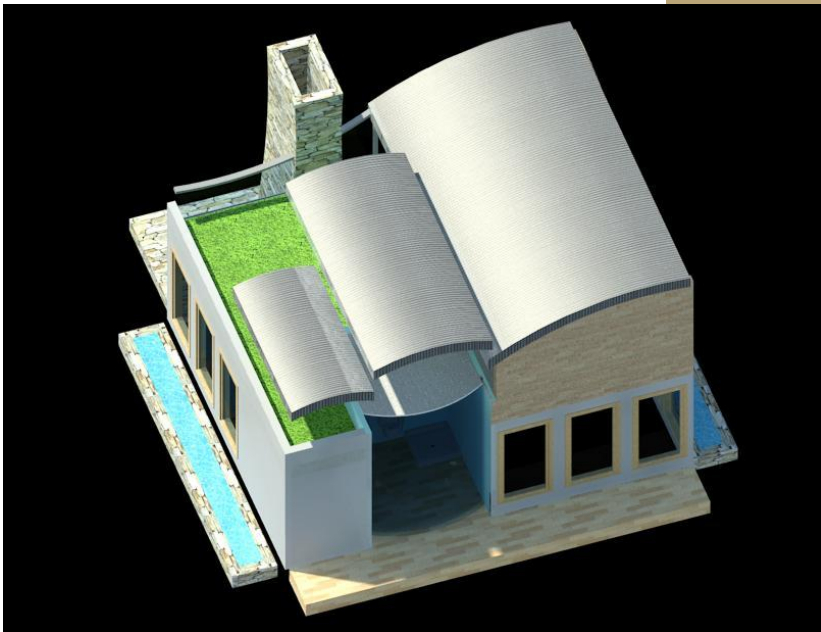
Proprietary Information



WORKFORCE DEVELOPMENT & TRAINING

LATTC: Smart Buildings

PROPOSAL FOR SMART GREEN SANDBOX HOME



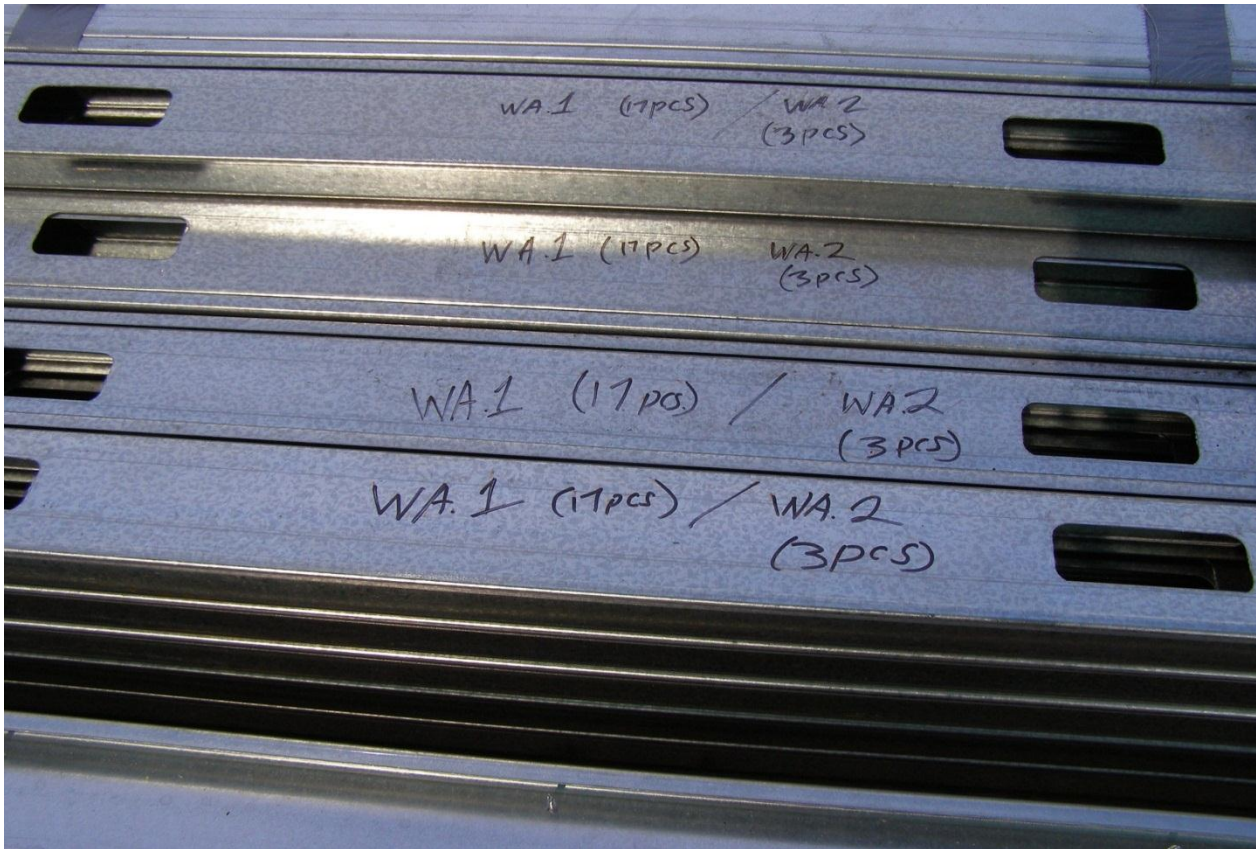
Student Pat Giles



WORKFORCE DEVELOPMENT & TRAINING

Wheeler Construction Company Inc.

Inventory control, detailed cutting and preassembly off site





WORKFORCE DEVELOPMENT & TRAINING

Wheeler Construction Company Inc.



Smart Manufacturing: Bottom tracks with pre-drilled holes and marked for placement of all studs and posts





WORKFORCE DEVELOPMENT & TRAINING

Wheeler Construction Company Inc.

- ❑ Wheeler Construction pre-cut framing for 1756 sf house in California and shipped to Hawaii
- ❑ Contractor with no experience building with CFS framed house in less than 2 weeks using framing kit provided by Wheeler Construction
- ❑ Zero framing waste was generated on building site in Hawaii



100% framing for 1756 SF house in 40 ft shipping container – 5 houses could fit in one shipping container



WORKFORCE DEVELOPMENT & TRAINING

Wheeler Construction Company Inc.

40' long trusses lifted without a crane





GBI: THREE MISSION AREAS

GBI Technical Institutes



GBI TECHNICAL INSTITUTES

- Mission: To create a sustainable, globally-competitive S.T.E.M. labor force for the 21st Century utilizing 10 fully integrated, world-class technical Institutes; led by our Nation's military Veterans
- Applied Research and Advanced Development to help leverage universities' Office of Technology Transfer
- Support the DoD's Long-Range Research and Development Planning Program (LRRDPP), which is currently identifying system concepts for the 2025-2030 timeframe



GBI TECHNICAL INSTITUTES

- ❑ Preparing for future technologies & opportunities
- ❑ Network HBCUs to formalize a national S&E research lab

Advanced Transportation Institute

Manufacturing Automation & Robotics Institute

Air and Space Institute

Med-Tech Institute (Medical Devices)

Alternative Energy Institute

Small Scale Electronics Institute

Digital Computation Institute

Software and Communication Technology Institute

Interconnected Devices Institute

STEM Policy and Ethics Institute

PLAN OF ACTION





GLOBAL BUSINESS INCUBATION (GBI)

Plan of Action

- In collaboration with IC² Institute, along with GBI's Academic and Industry partners, apply for Federal/State/Local grants and contracts to conduct Feasibility Assessments, Impact Studies, Workforce Development & Training, Technical Studies, and more:

Department of Commerce (DoC)	Department of Labor (DoL)
Department of Veterans Affairs	Department of Defense (DoD)
Department of Energy (DoE)	Department of Homeland Security (DHS)
National Science Foundation (NSF)	Small Business Administration (SBA): Small Business Technology Transfer/ Innovation Research Contracts

THANK YOU!

QUESTIONS?



www.GlobalBusinessIncubation.com